



*Lighting*

PRODUCT  
CATALOUGE

# index •

## ABOUT US

## TABLE LAMPS

- Mosaic Table Lamps
- Ottoman Table Lamps
- Pyrex Glass Table Lamps
- Blown Glass Table Lamps
- Chained Table Lamps
- Crystal Stony Table Lamps

## FLOOR LAMPS

## WALL LAMPS

- Mosaic Wall Lamps
- Chained Wall Lamps
- Stony Wall Lamps
- Lasercut Wall Lamps

## CHANDELIERS

- Mosaic Chandeliers
- Ottoman Chandeliers
- Pyrex Chandeliers
- Blown Glass Chandeliers
- Chained Chandeliers
- Crystal Stony Chandeliers
- Stony Chandeliers
- Filigree Blown Chandeliers

# about us •

## WHO WE ARE

Here at Loop Limited, our main focus is marketing the following products for home and office use:

- **LED lighting**
- **Decorative lighting**
- **Upholstery and curtain fabrics**
- **Home textile products**

We also provide marketing solutions for construction materials. Loop Limited additionally provides consulting solutions for the following industries: import & exports, tourism, health tourism and real estate investment.

## Loop Decorative •

We believe home is the most important place in the world, therefore we have decided to put our expertise, experience, new projects and work force together to create lamps inspired by different cultures of Anatolia. All of our models are truly original, handmade of brass and brass plate along with extra fine glass of unique colors.

## Ottoman Light



# Table Lamps

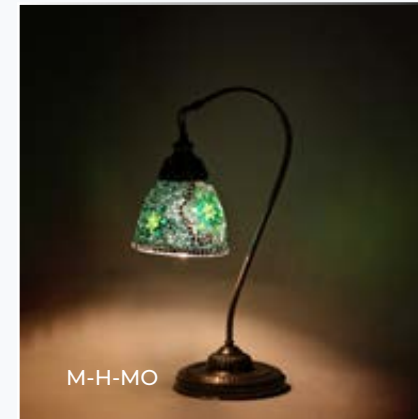


We as Loop Decorative here to design decorative table lamps to have better ambiance in places. we have determined the mission to supply our valuable customers table lamp products in rich

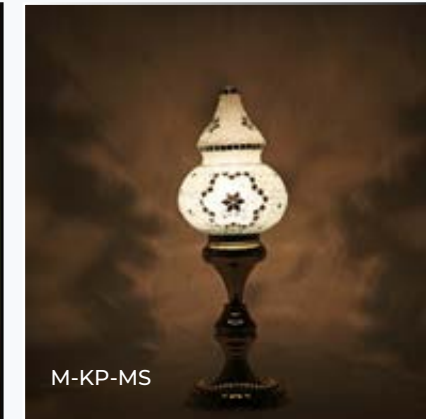
Some architectural tips for usage of wall lamps;

- Warm atmosphere in living rooms
- Attractive models for inviting entries

## Mosaic Table Lamps



M-H-MO



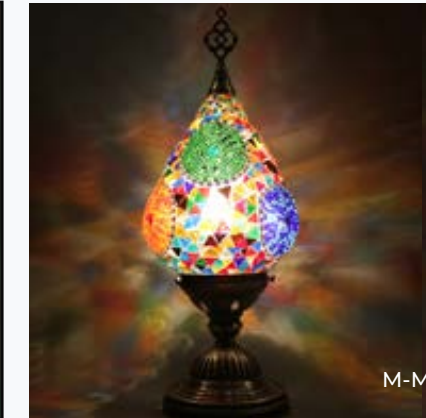
M-KP-MS



M-MC-M



M-MCB-M



M-MM-M



M-N5-M





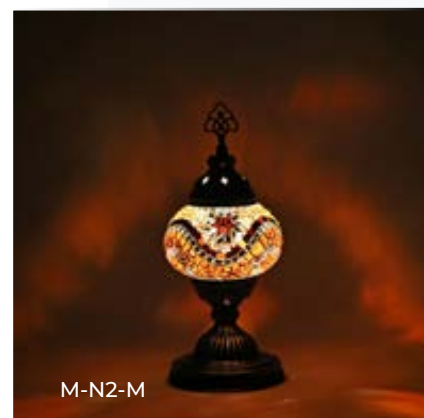
M-N5-MO



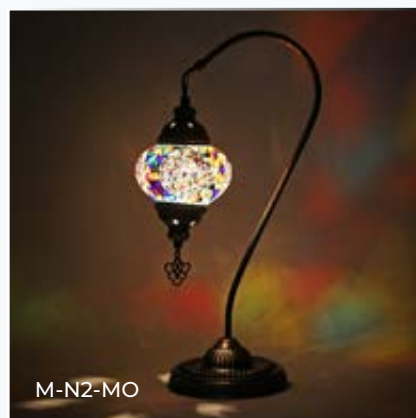
M-N1-M



M-N1-MO



M-N2-M



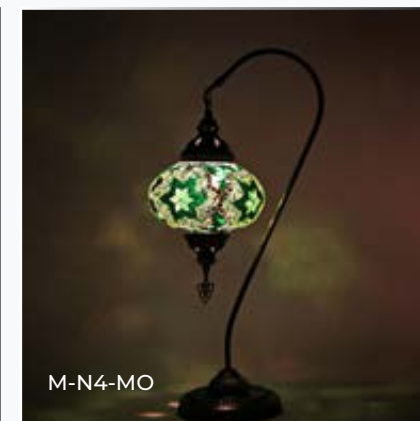
M-N2-MO



M-N3-M



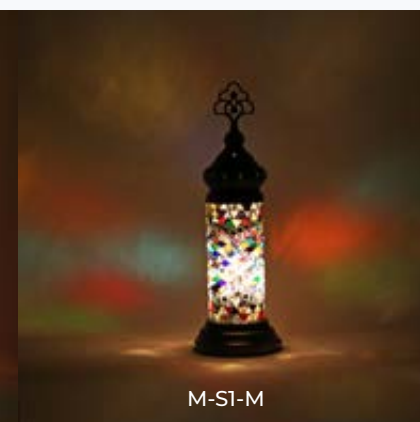
M-N4-M



M-N4-MO



M-N6-M



M-S1-M



## MOSAIC TABLE LAMP SERIES



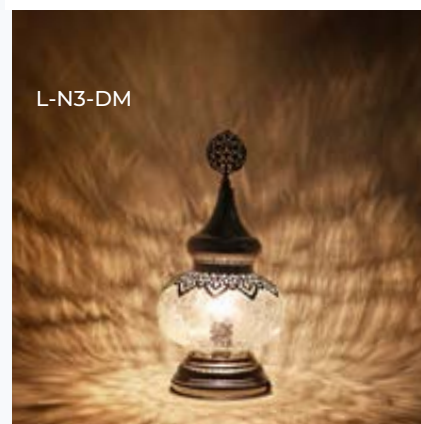
## Ottoman Table Lamps



M-N2-MOB



L-N3-OS



L-N3-DM



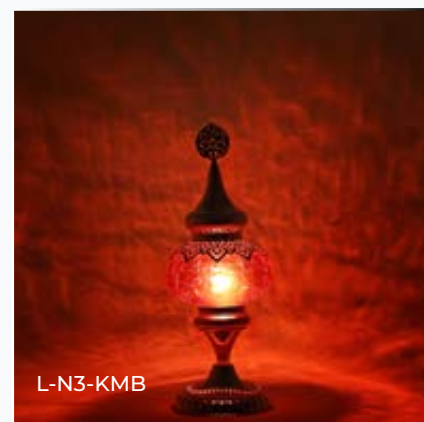
L-ST-MK

GOLD  
Series



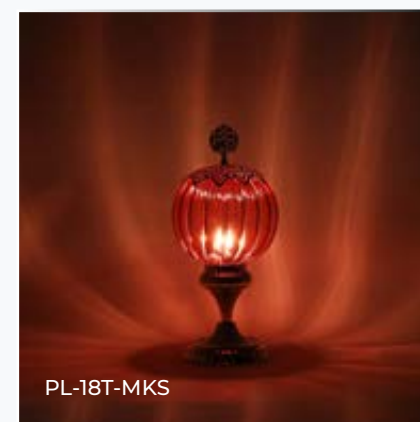
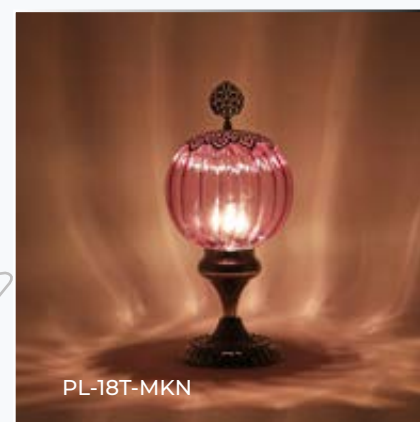
L-ST-MU





## OTTOMAN TABLE LAMP SERIES

## Pyrex Glass Table Lamps



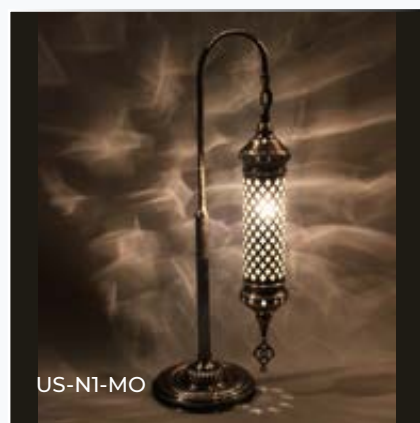
## PYREX GLASS TABLE LAMP SERIES



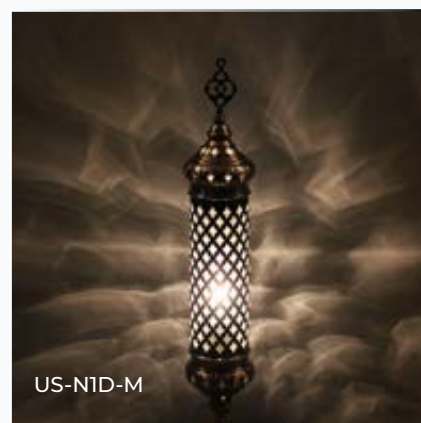
## Blown Glass Table Lamps



US-N1-M



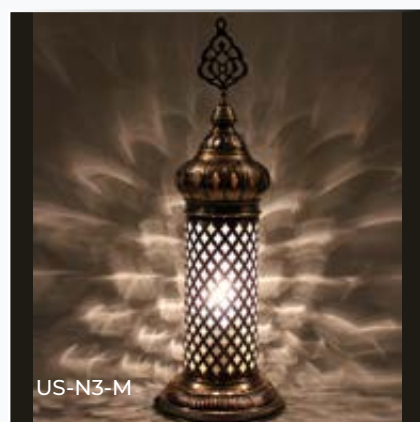
US-N1-MO



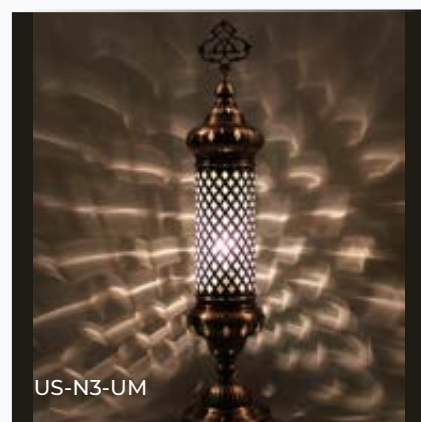
US-N1D-M



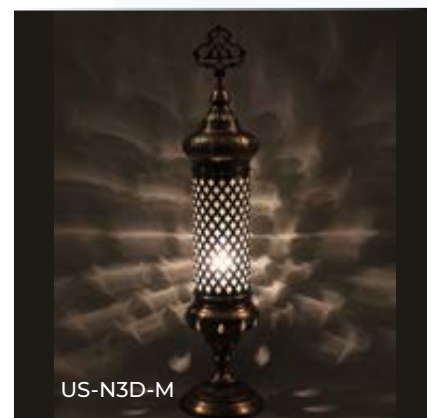
US-N2-M



US-N3-M



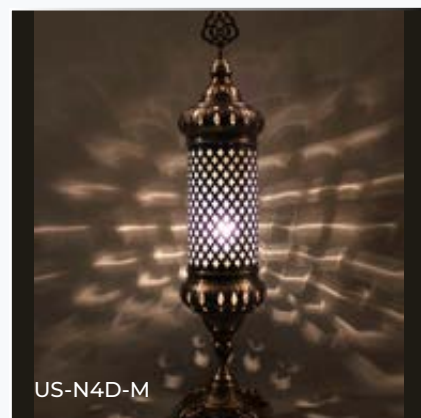
US-N3-UM



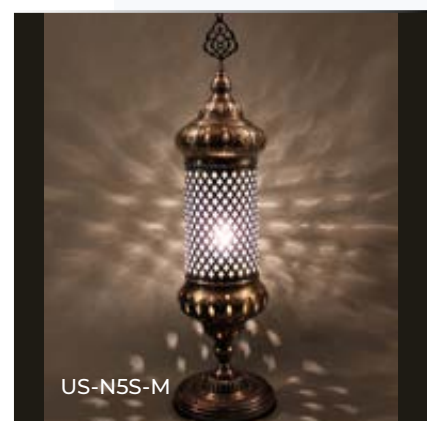
US-N3D-M



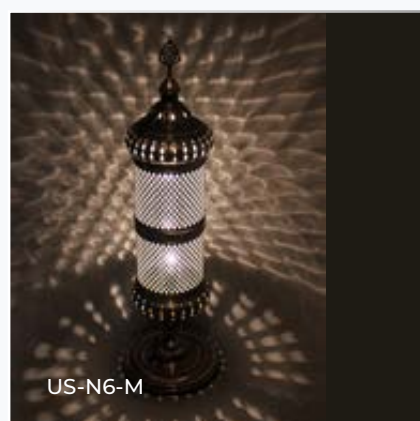
US-N4-M



US-N4D-M



US-N5S-M



US-N6-M

## BLOWN GLASS TABLE LAMP SERIES

## Chained Table Lamps



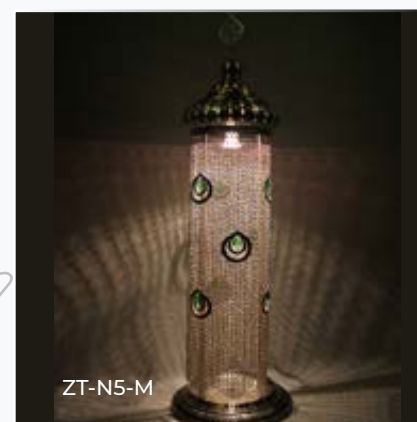
ZT-N2-M



ZT-N3-M



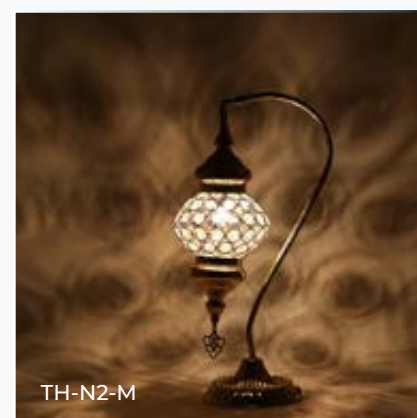
ZT-N4-M



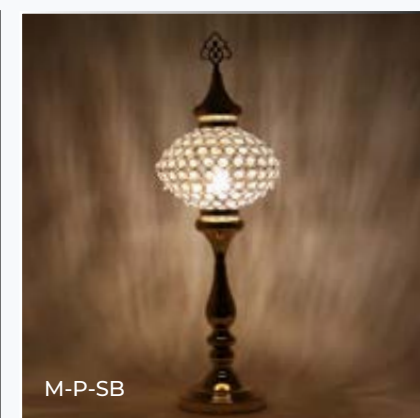
ZT-N5-M

## CHAINED TABLE LAMP SERIES

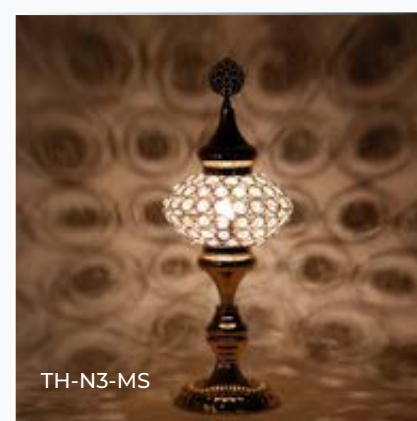
## Cyrstal Stony Table Lamps



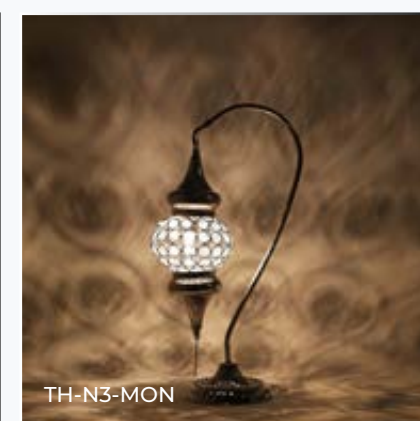
TH-N2-M



M-P-SB



TH-N3-MS



TH-N3-MON

# Cyrstal Stony Table Lamp Series.



# FLOOR LAMP.

We cannot deny that floor lamps are the most important complementary parts in our home decors. In fact, they are becoming very popular in home decors for interior designers and residents., various, sometimes interesting, different models; floor lamps create a different ambience in their surroundings.

## Quick Tip

It is possible to customize Floor Lamp with different type of glass models such as;



Mosaic Glass  
No 2, No 3

Ottoman Glass  
No 2, No 3

Crystal Stony  
Model

### Some architectural tips for usage of floor lamps;

- You can use floor lamps in living rooms, kitchen, bedrooms or in any rooms depending on your style.
- In living room; it is mostly preferred to use next to or behind sofas, next to a single seat, in empty places with a little table or a TV.



M-B-Y3



M-B-Y5



M-B-Y7



M-B-Y9



M-S5-YU



# Wall Lamps

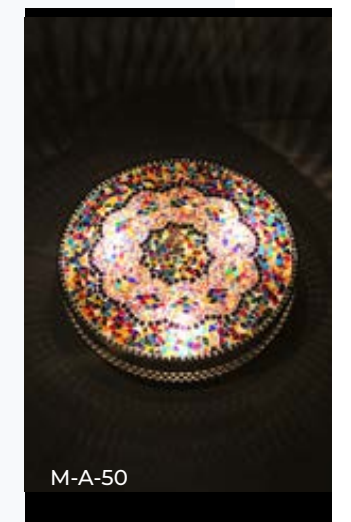
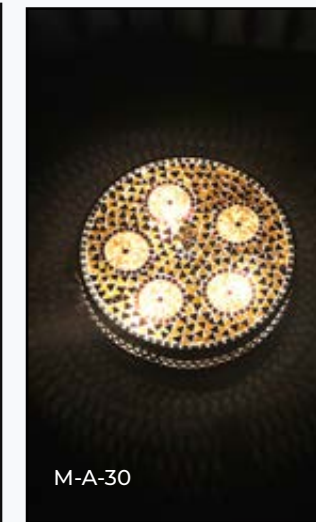
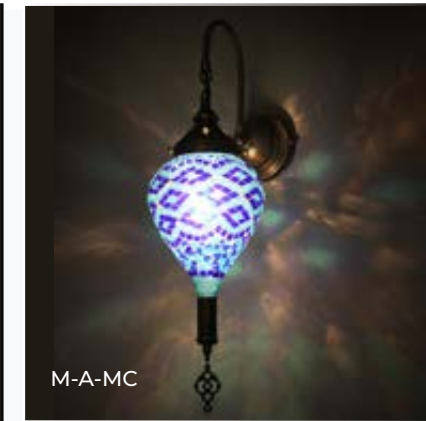
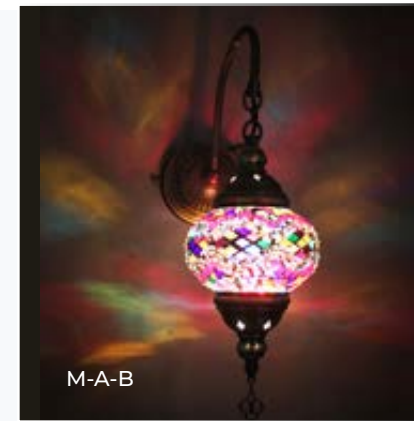
Some architectural tips for usage of wall lamps;

- Warm atmosphere in living rooms
- Attractive models for inviting entries
- Keep corners and edges bright

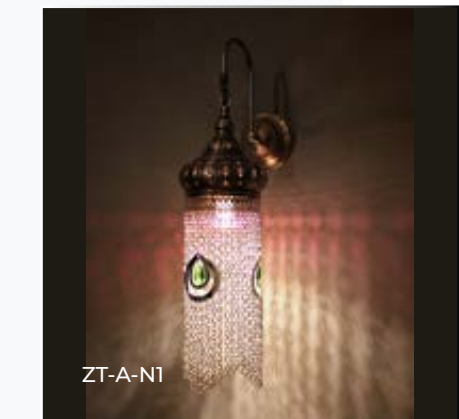
Wall Lamps which make wall decors elegant are used for both functional and decorative purposes. They are mainly used in hotels, houses, offices, gardens and terraces for indoor uses and outdoor uses. We do not suggest our customers use these lamps for main lighting systems. Wall lamps are mostly preferred for auxiliary lighting in places.



## Mosaic Wall Lamps



## Stony Wall Lamps



## Chained Wall Lamps

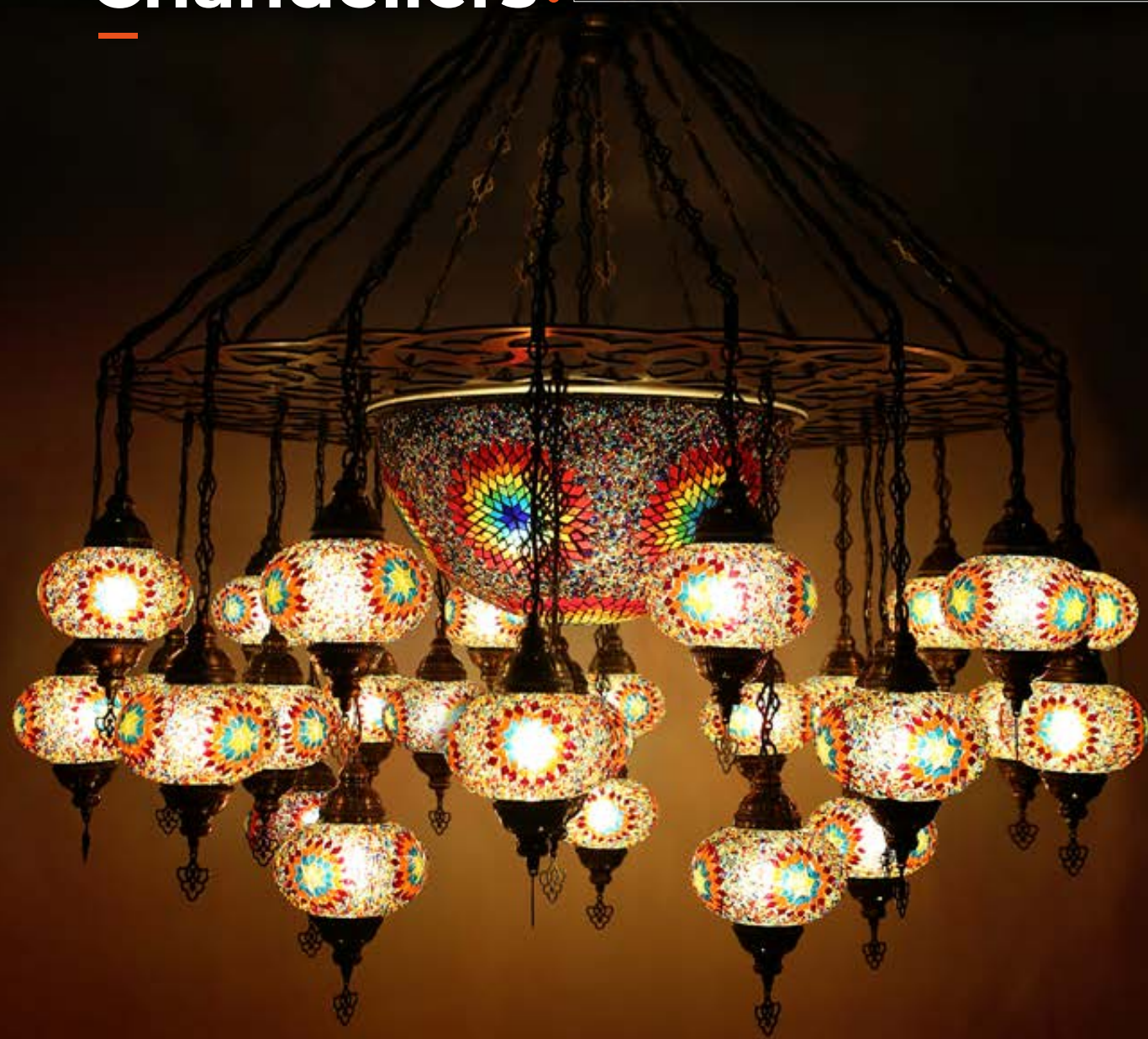
## Lasercut Wall Lamps



## WALL LAMP SERIES



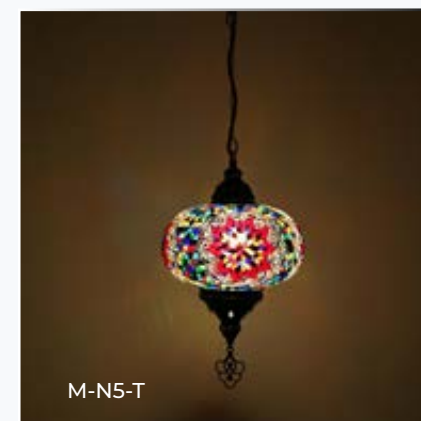
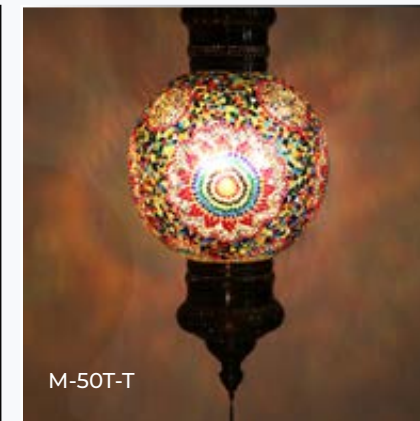
# Chandeliers.



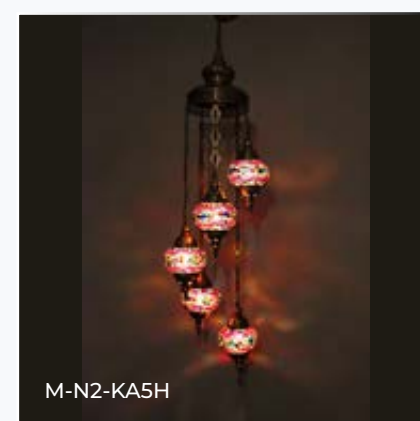
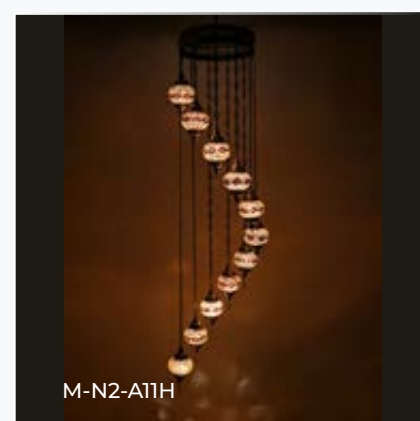
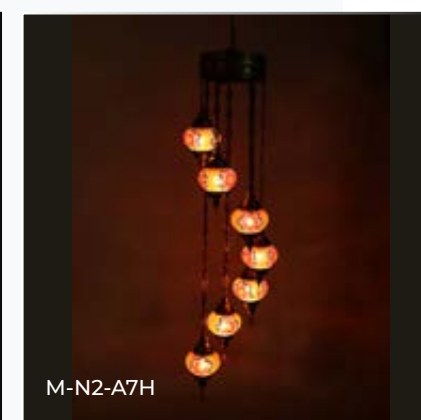
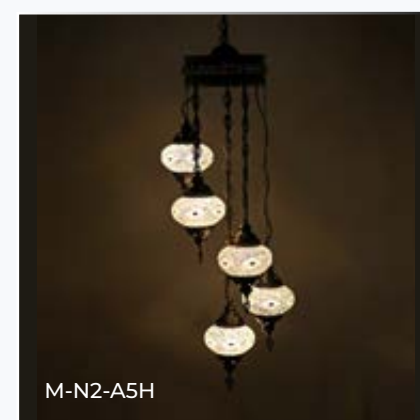
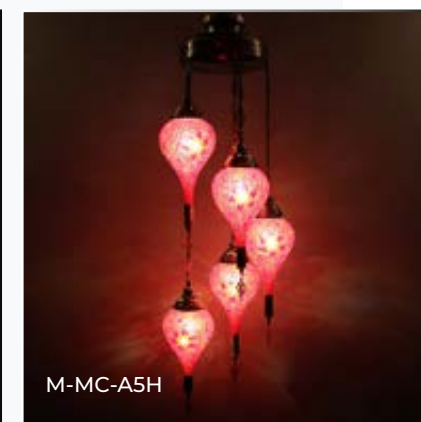
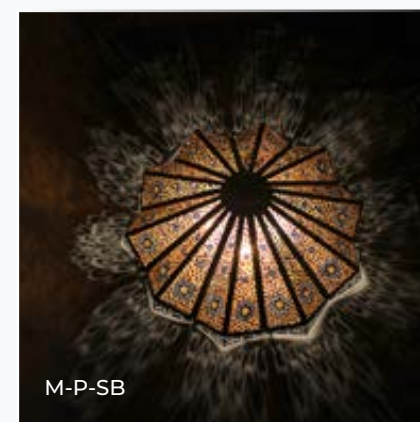
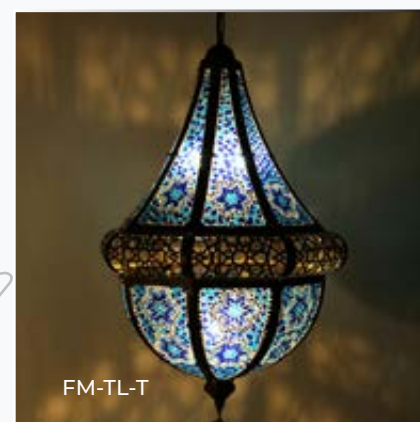
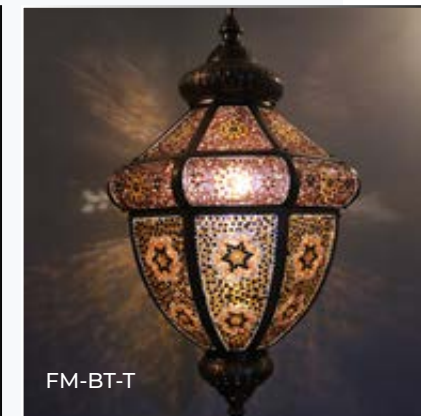
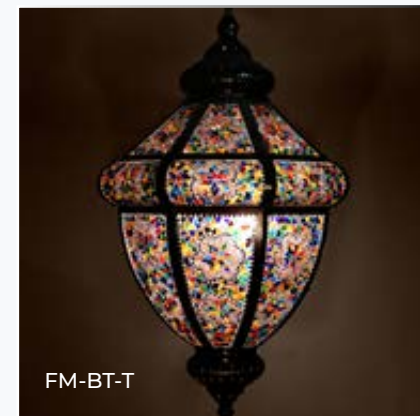
Chandeliers are electrically operated lighting products that are used for illumination of interiors. When choosing the chandelier, we especially suggest our customers to focus on the color of the room, the curtains and the furniture, and the choices made in this way, make it a more spectacular home or office.

The glamorous chandeliers, which have been used in cafes and restaurants as well as in homes and workplaces, have become the most attention-grabbing element when entered into an environment today. The chandeliers, which have the most effect on the elegance of a restaurant or the design of a cafe, are used by interior designers as a great aesthetic image tool.

## Mosaic Chandeliers



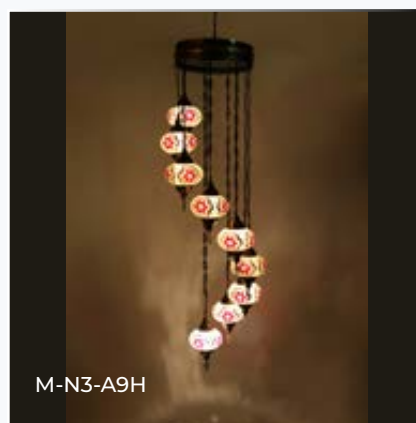




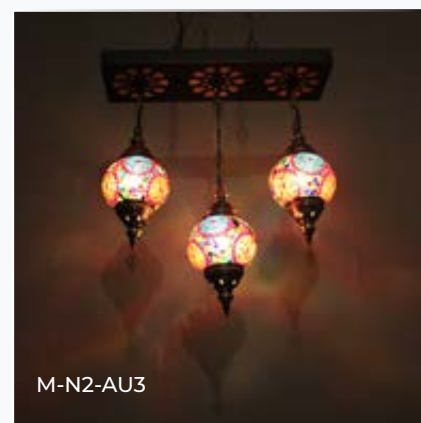




M-N2-KA9H



M-N3-A9H



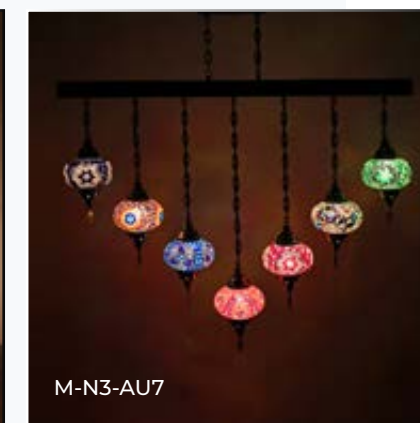
M-N2-AU3



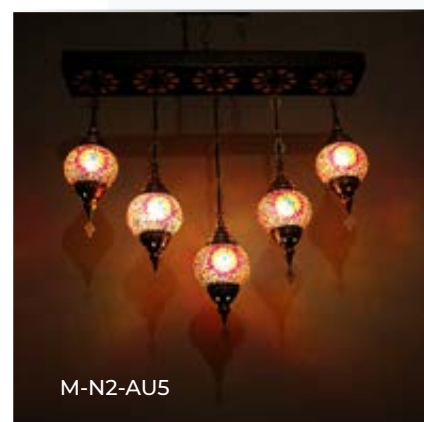
M-N2-PA10H



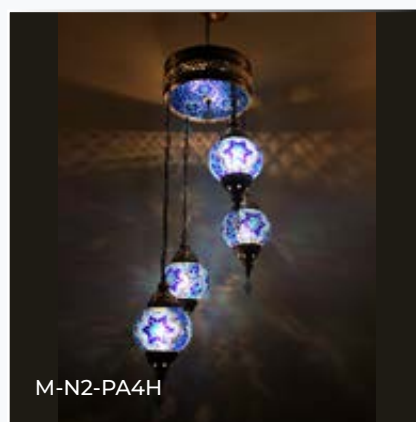
M-N2-PA10H



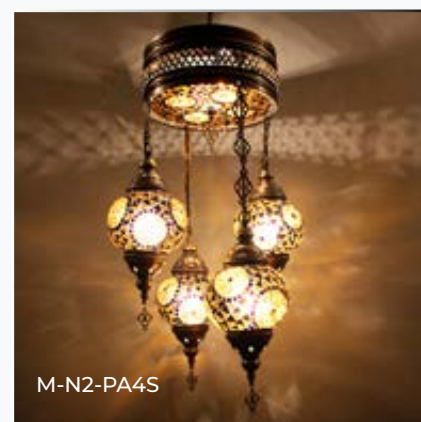
M-N3-AU7



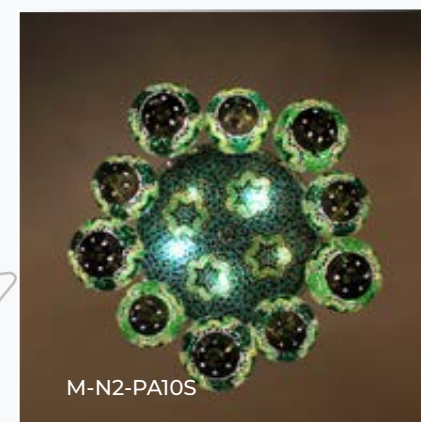
M-N2-AU5



M-N2-PA4H



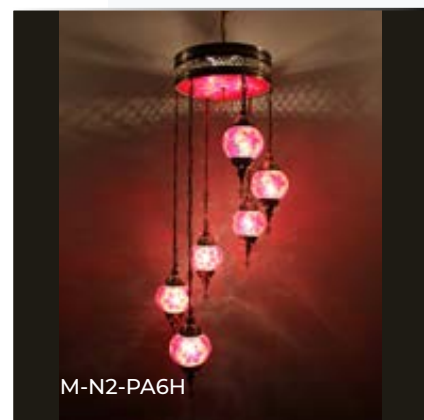
M-N2-PA4S



M-N2-PA10S



M-N2-PA10S



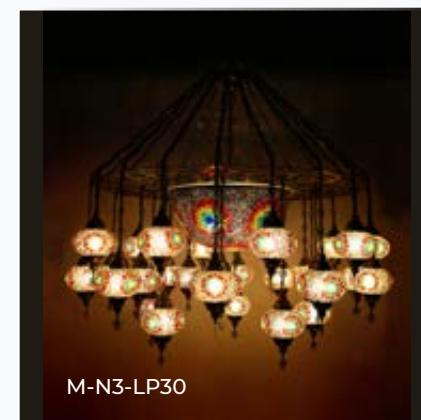
M-N2-PA6H



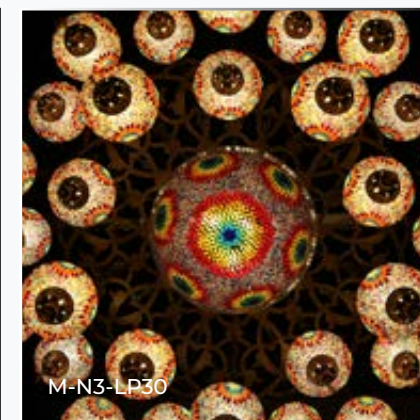
M-N2-PA6S



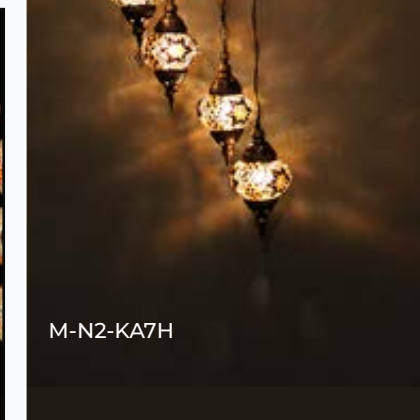
M-N2-KA7H



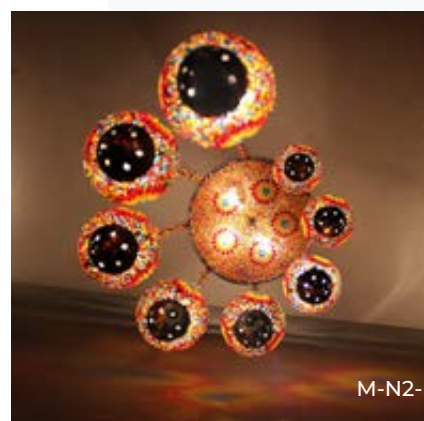
M-N3-LP30



M-N3-LP30



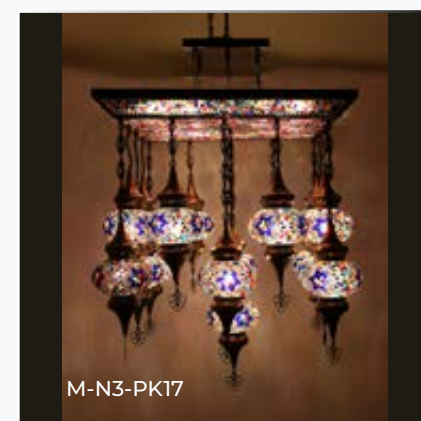
M-N2-KA7H



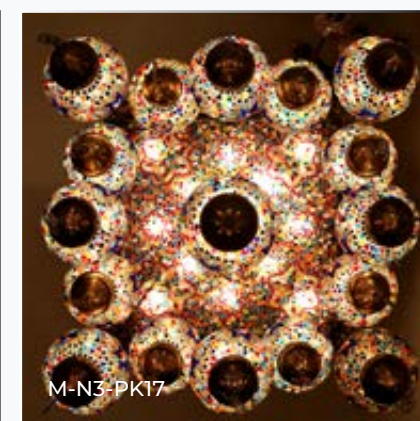
M-N2-PA8H



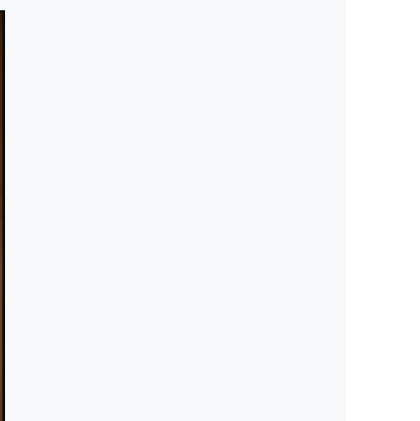
M-N2-PA8S



M-N3-PK17



M-N3-PK17

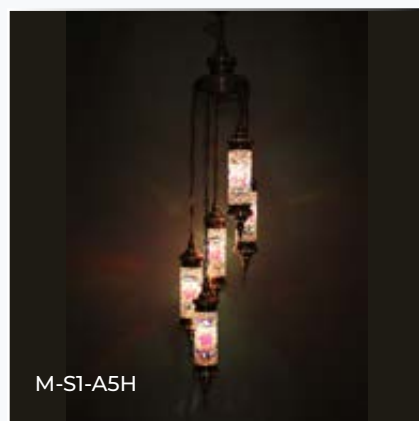


M-N3-PK17





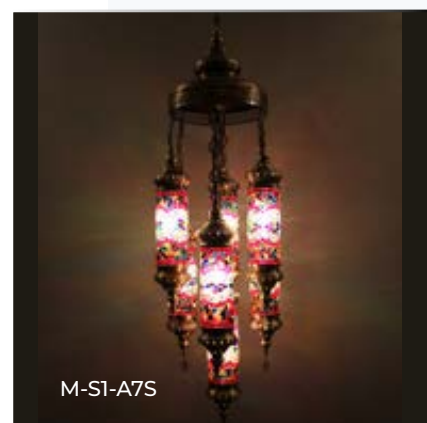
M-S1-A3



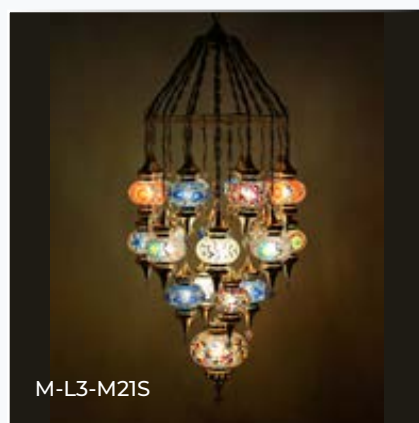
M-S1-A5H



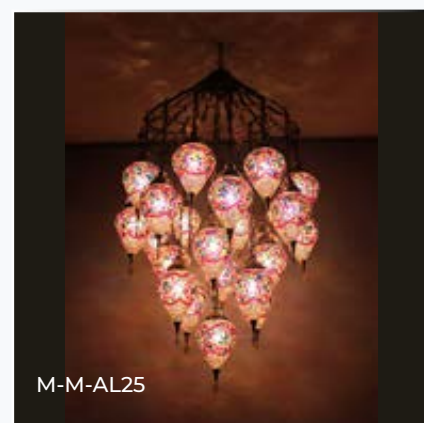
M-S1-A5S



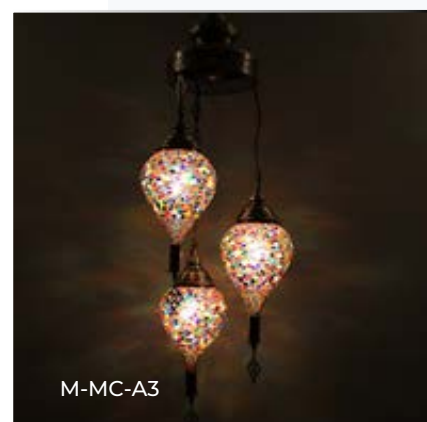
M-S1-A7S



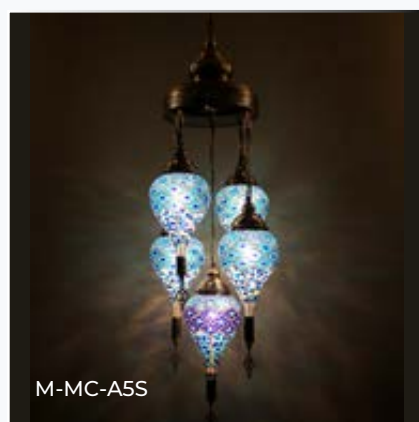
M-L3-M21S



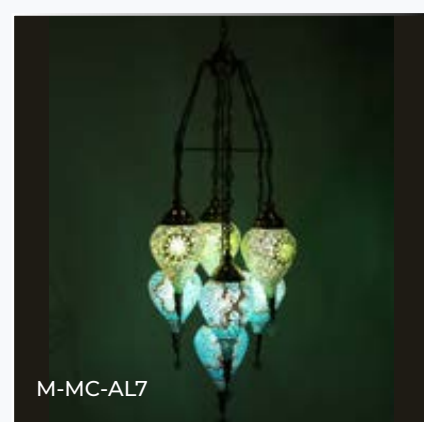
M-M-AL25



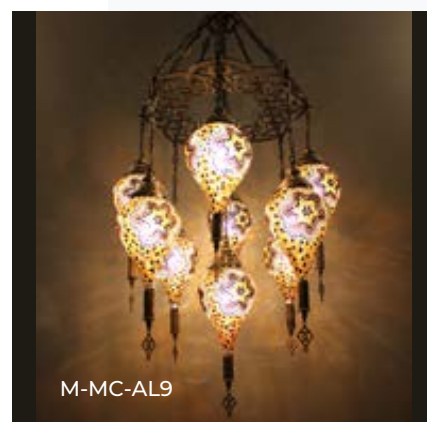
M-MC-A3



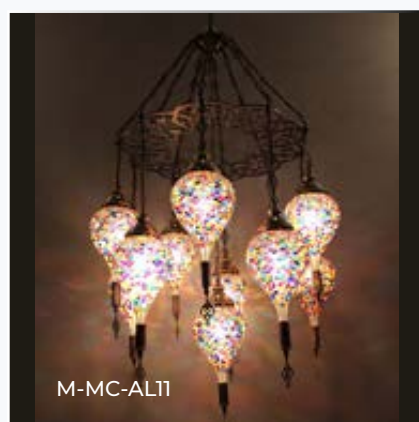
M-MC-A5S



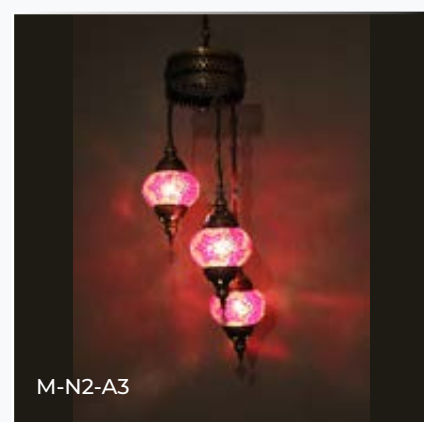
M-MC-AL7



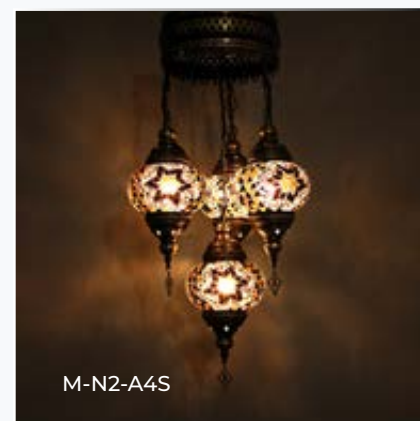
M-MC-AL9



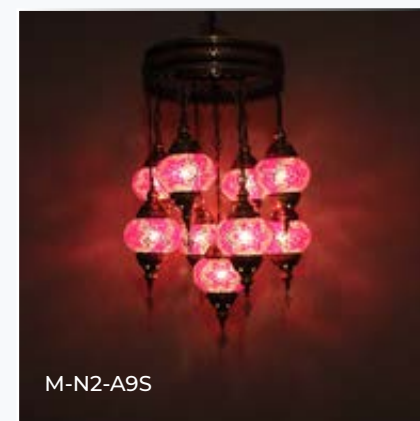
M-MC-AL11



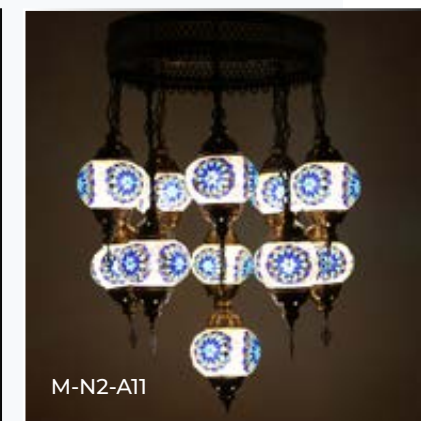
M-N2-A3



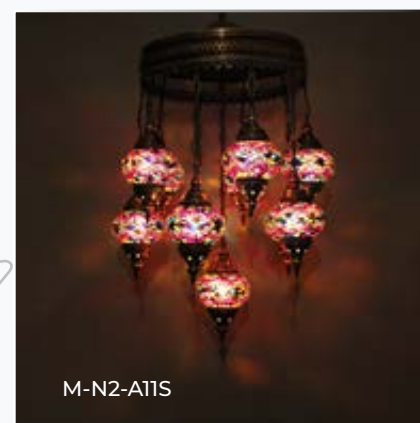
M-N2-A4S



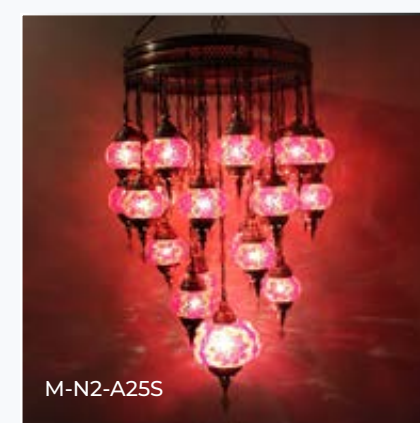
M-N2-A9S



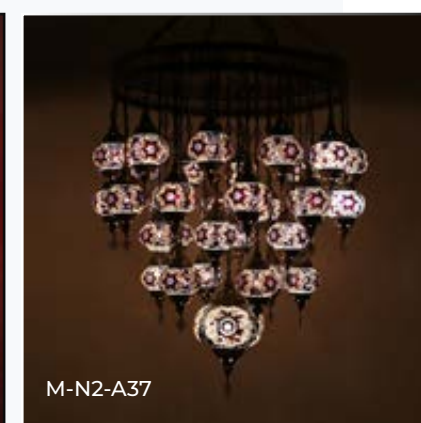
M-N2-A11



M-N2-A11S



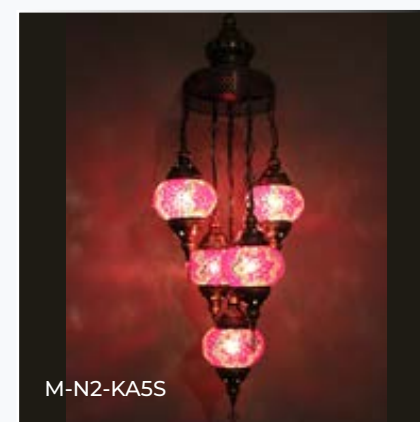
M-N2-A25S



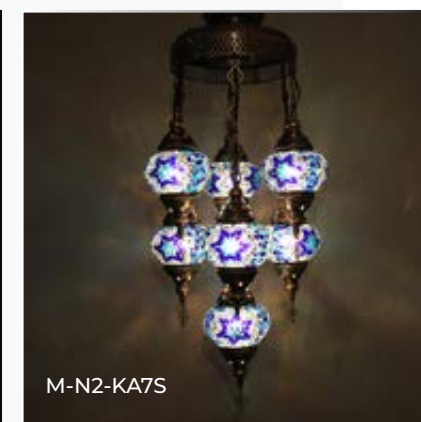
M-N2-A37



M-N2-KA3



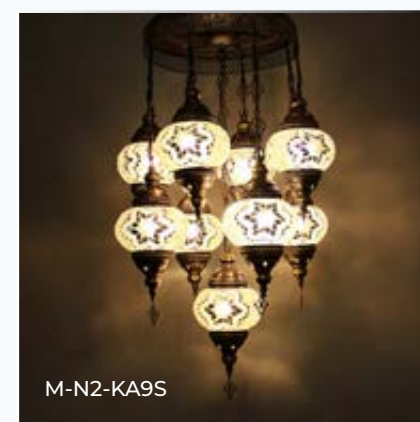
M-N2-KA5S



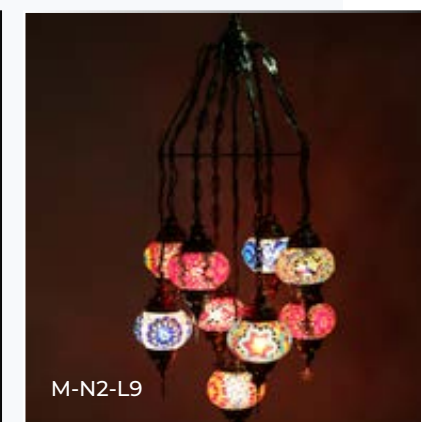
M-N2-KA7S



M-N2-KA9



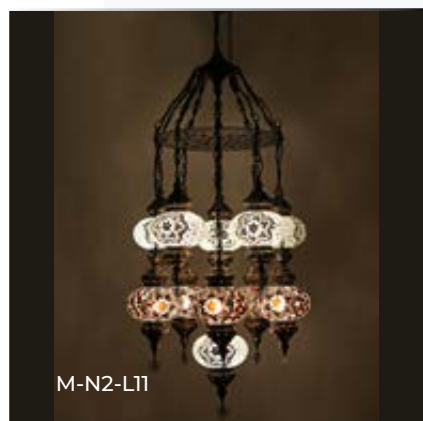
M-N2-KA9S



M-N2-L9



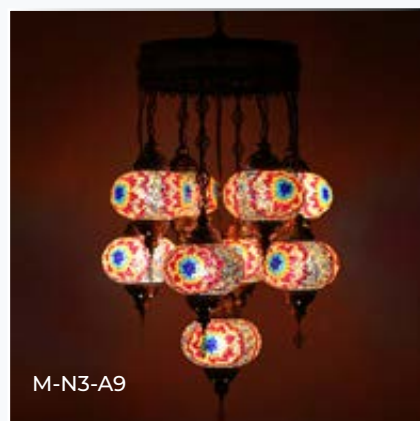




M-N2-L11



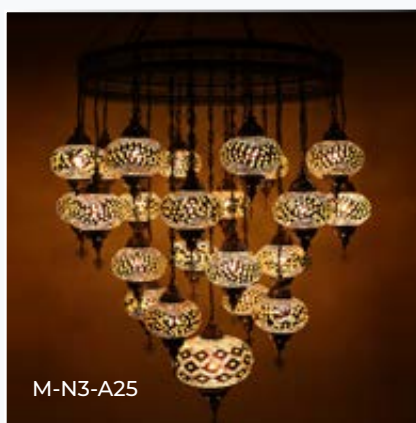
M-N3-A4S



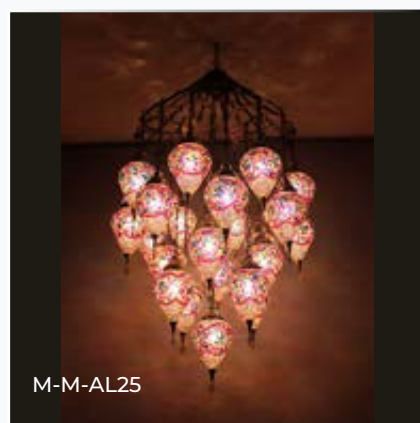
M-N3-A9



M-N3-A11



M-N3-A25



M-M-AL25



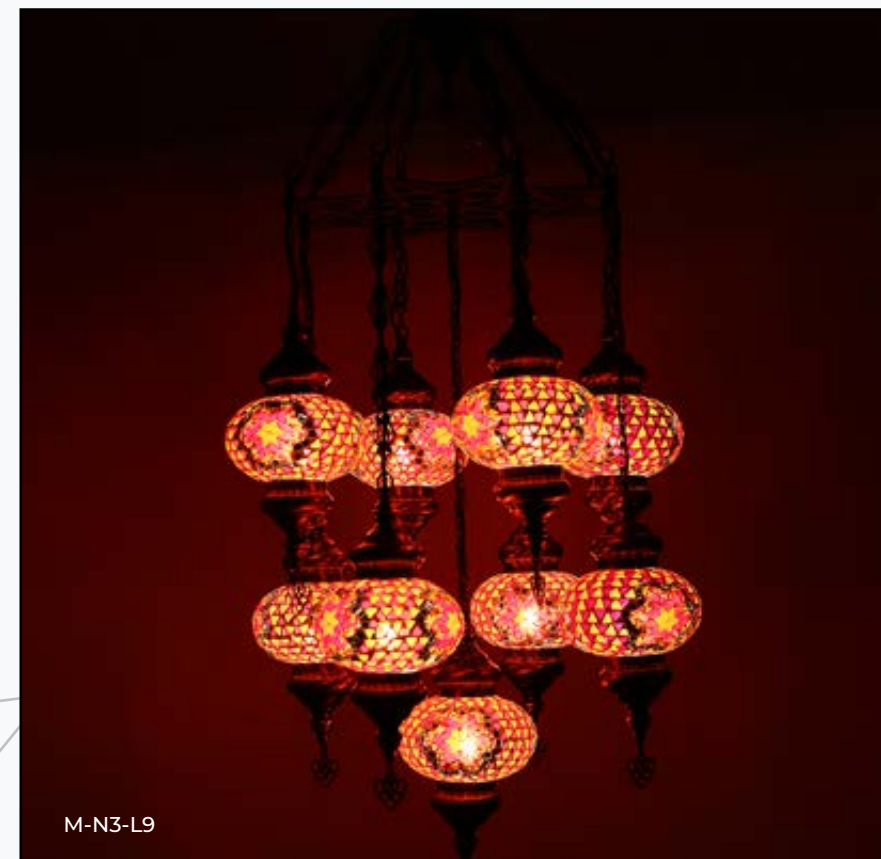
M-N3-KA7



M-N3-L7



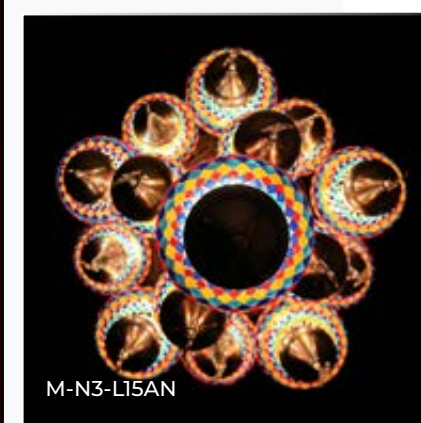
M-N3-A37



M-N3-L9



M-N3-L15AN



M-N3-L15AN



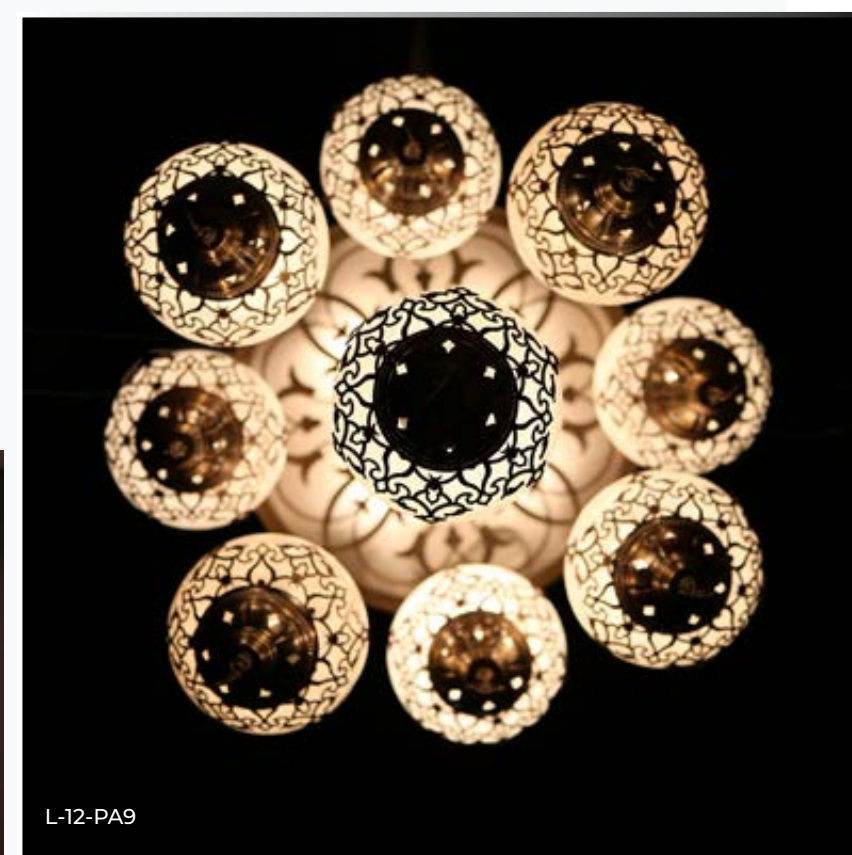
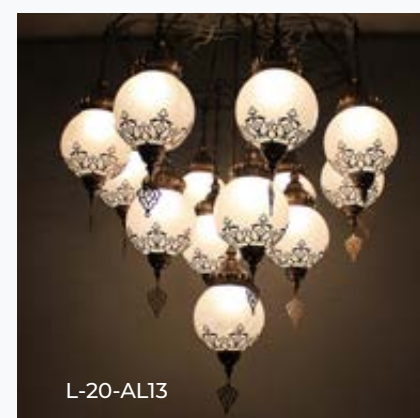
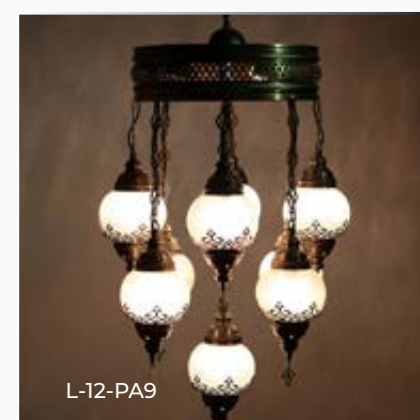
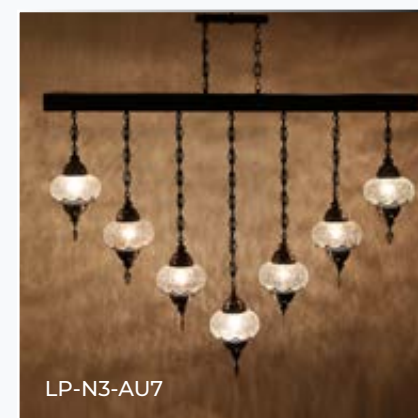
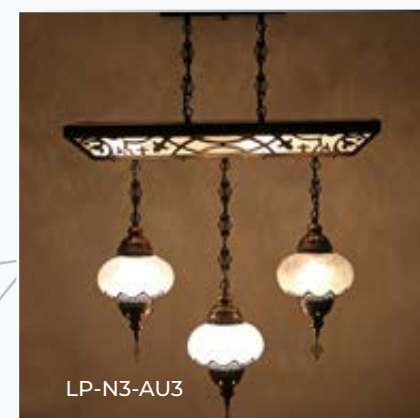
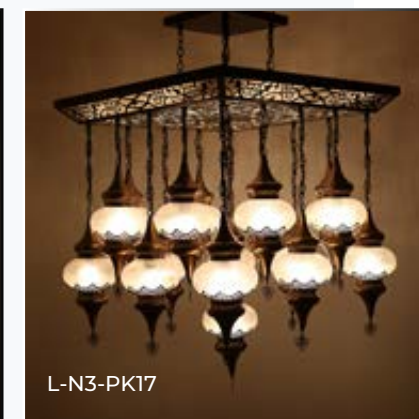
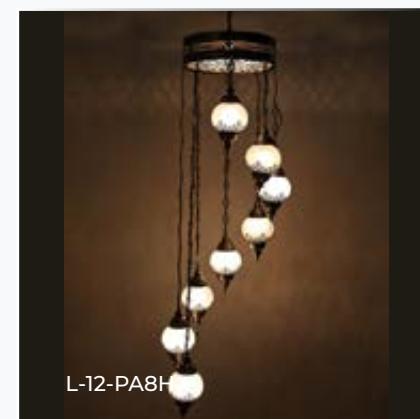
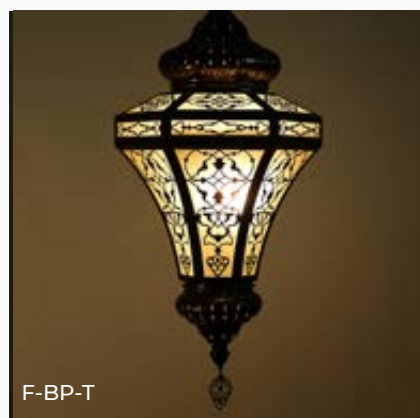
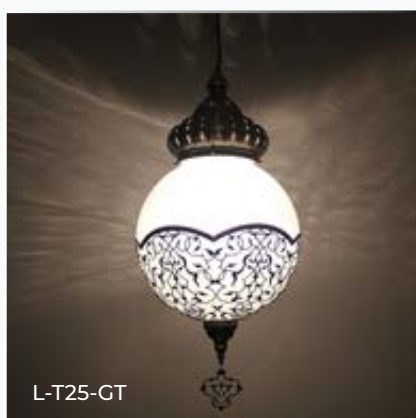
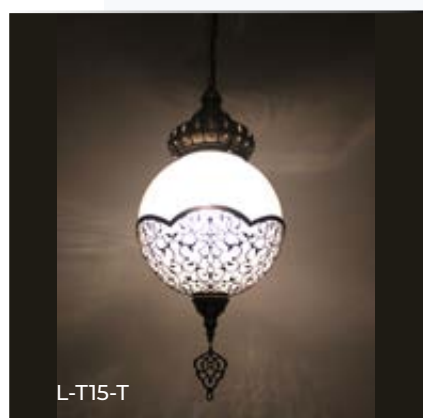
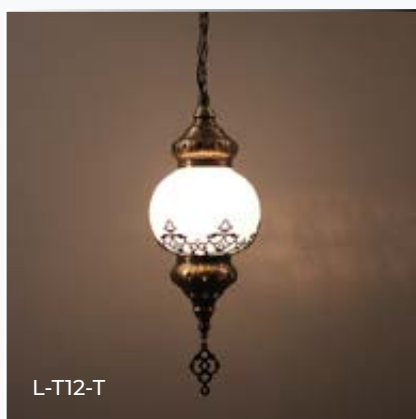
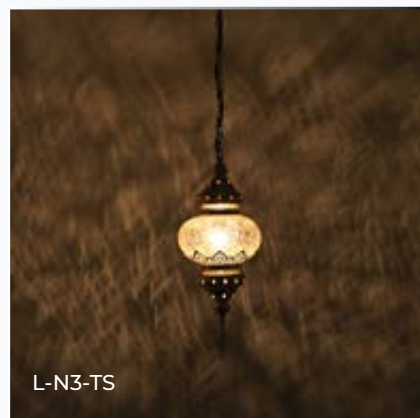
M-N3-LS25



M-T15-L15



## Ottoman Chandeliers



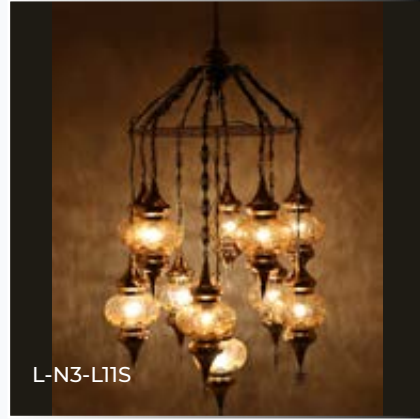




L-N3-L3



L-N3-L5N



L-N3-L11S



L-N3-L15



L-N3-L21



L-N3-S11



L-T12-A7S



L-T12-A11S



L-T12-A16



L-T15-A3



L-T12-A11S



L-N3-37S

**OTTOMAN**  
Chandelier  
Series



## Pyrex Glass Chandeliers

DECORATIVE

DECORATIVE



P-B2-T



P-BTD-T



P-D1-T



P-DT15-T



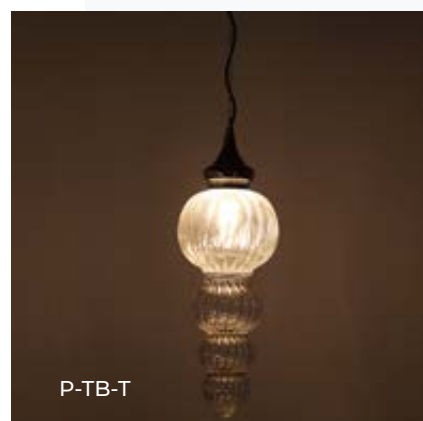
P-DT20-T



P-DT25-T



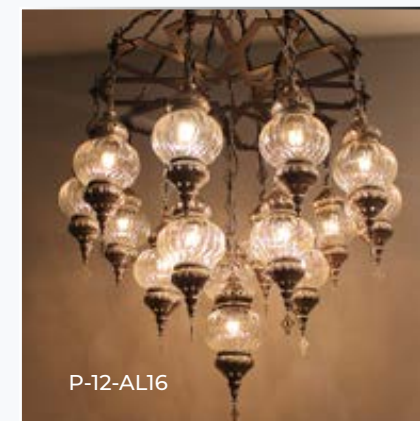
P-T-TN



P-TB-T



PS-C2-L25



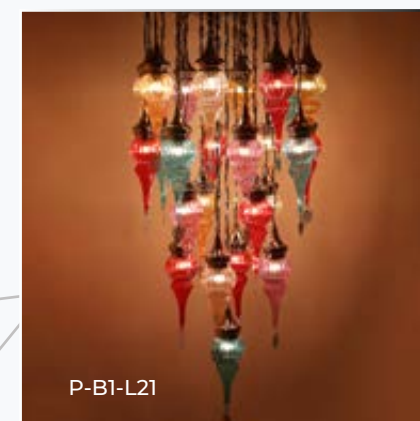
P-12-AL16



P-B1-7B



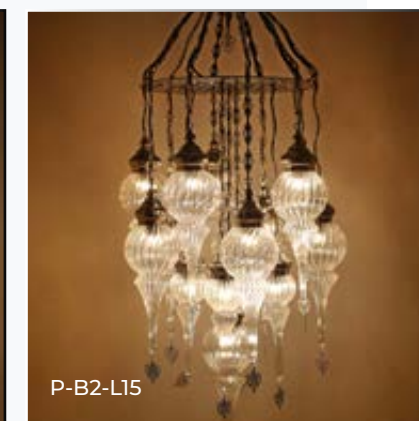
P-B1-L11S



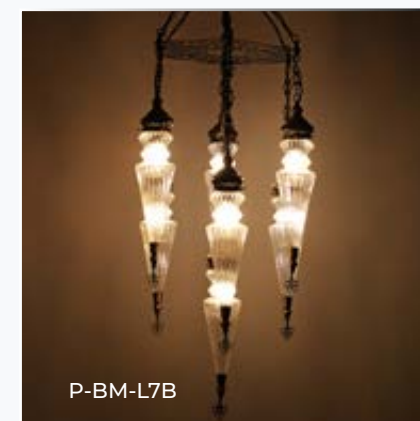
P-B1-L21



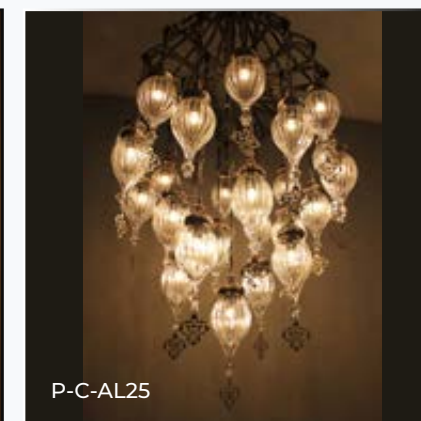
P-B2-L5



P-B2-L15



P-BM-L7B



P-C-AL25



P-DC-L5



P-B1-7B



P-KT-L7



P-KT-L13N



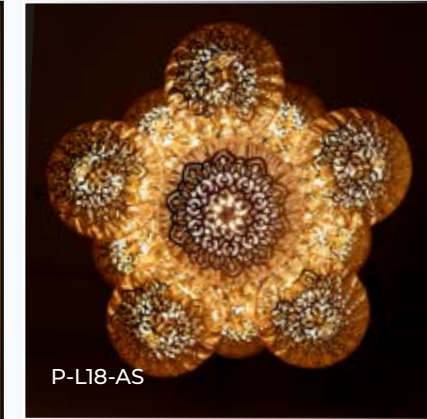


**PYREX** GLASS  
SERIES

P-KC-L 43



P-L18-AS



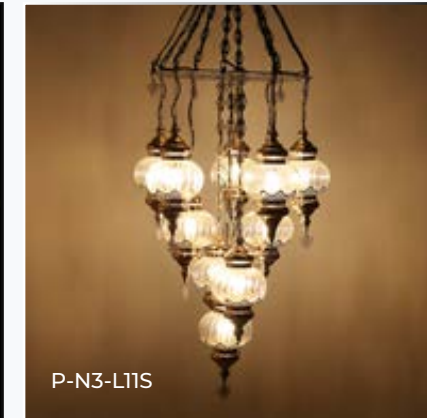
P-L18-AS



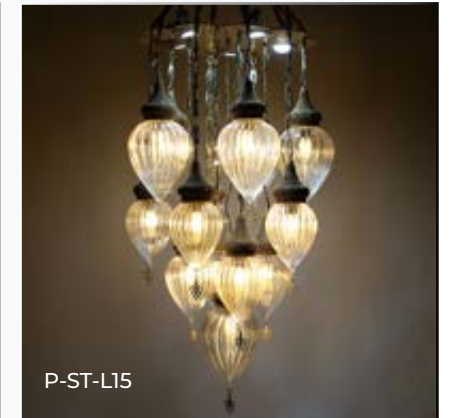
P-N3-L11



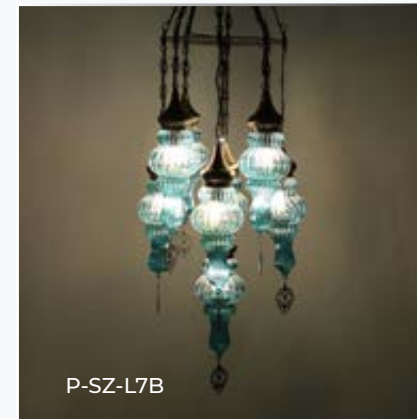
P-N3-L11



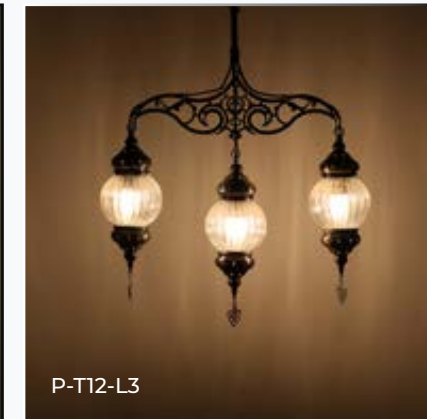
P-N3-L11S



P-ST-L15



P-SZ-L7B



P-T12-L3



P-T18-L5S



P-T18-L13



P-T18-L13S



P-TB-L6N





P-TSS-9L



P-U2-AL13



P-UK-AL7



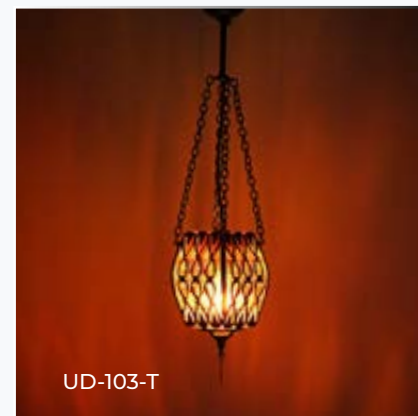
P-UK18-L5



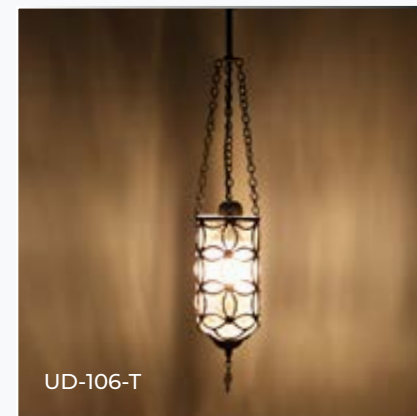
P-UK18-L5

**PYREX** GLASS  
SERIES

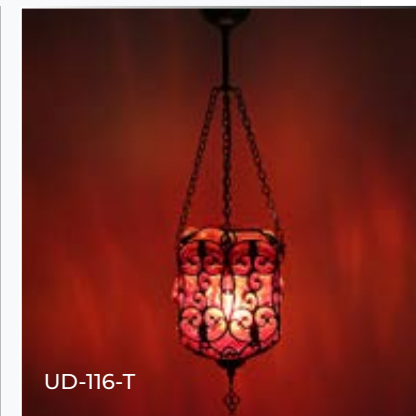
## Blown Glass Chandeliers



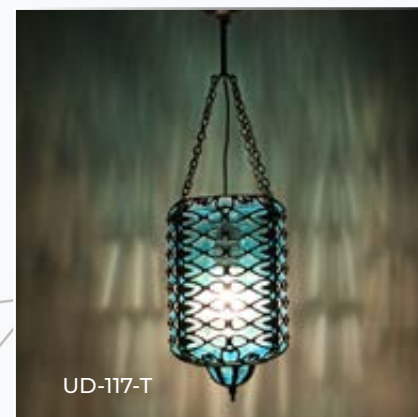
UD-103-T



UD-106-T



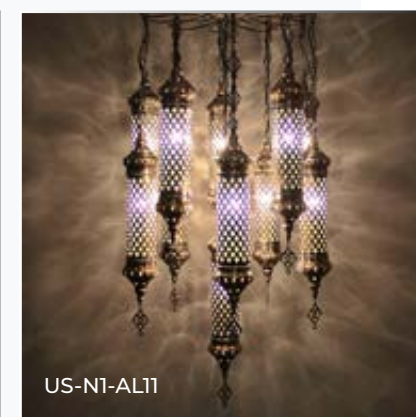
UD-116-T



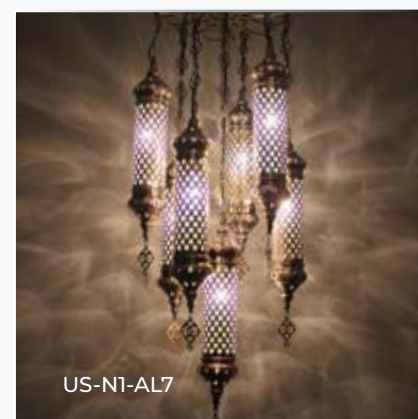
UD-117-T



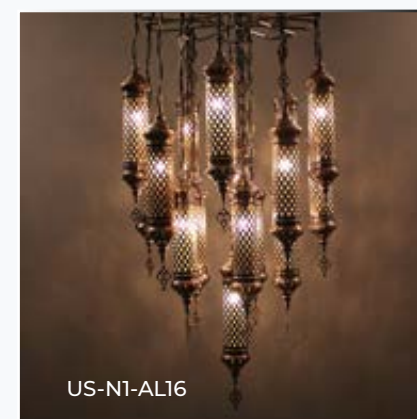
US-N1-AL9



US-N1-AL11



US-N1-AL7



US-N1-AL16

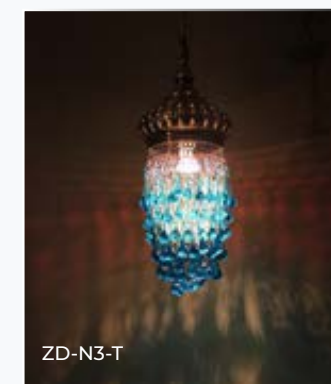
## Stony Chandeliers



ZD-N1-T



ZD-N2-T



ZD-N3-T



ZD-N4-T



## Crystal Stony Chandeliers



# CHAINED.

## Chandeliers



## Filigree Blown Chandeliers







**Loop Limited – Foreign Trade Co.**

Esentepe Mah.  
Kasap Sok. 14/7 Şişli, İstanbul/Turkey  
Tel : +90 212 219 00 18  
Fax : +90 212 219 00 18  
E -mail : info@loopexim.com

[www.loopdecorative.com](http://www.loopdecorative.com)

